

Recording start and stop

Sonata

Polysomnograph



1. Preparation

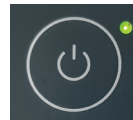
Attach the sensors to the patient.

A Recording with cable



Connect the interface cable to Sonata.

B Recording with WLAN



Switch the device on and off with the ON/OFF key on the Sonata.

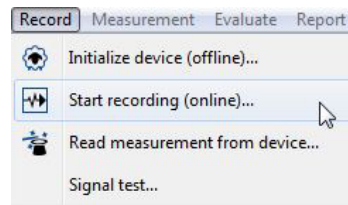
2. Start recording


2.1



Open the MiniScreen Viewer software by double clicking the **MSV** symbol on the desktop.

2.2

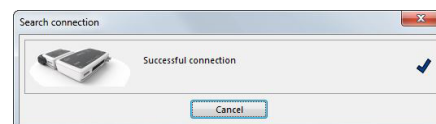


In the **Record** tab, select **Start recording (online)** or click the  symbol in the menu or on the dashboard.

2.3

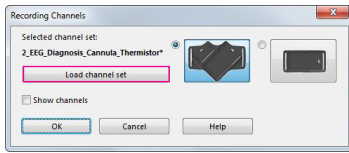
Enter the patient data in the mask. Then select **Start transfer**.

2.4



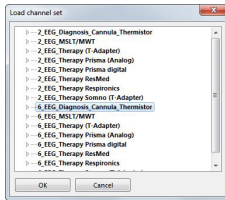
The connection to Sonata is made.

2.5



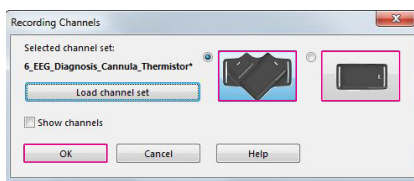
Load channel set to select a configuration.

2.6



Select the channel set from the list and confirm with **OK**.

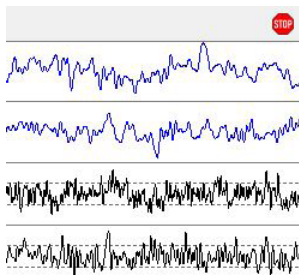
2.7



Select the bracket (V-shaped or rectangular) to be used for the Main and Neuro module. Click **OK** to start the recording.

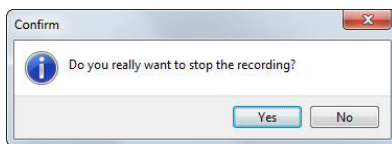
3. Stop recording

3.1



Click the **Stop sign** in the upper right-hand corner to end the recording.

3.2



Confirm with **Yes**.

Please note: When the recording has ended, connect Sonata with the cable to recharge the battery. The battery has to be charged for a recording.




 Dr. Fenyves und Gut Deutschland
 Daimlerstraße 23
 72414 Rangendingen, Germany

Sales + Service
 Löwenstein Medical
 Arzbacher Straße 80
 56130 Bad Ems, Germany
 T. +49 2603 9600-0
 F. +49 2603 9600-50
 info@loewensteinmedical.com
 loewensteinmedical.com

