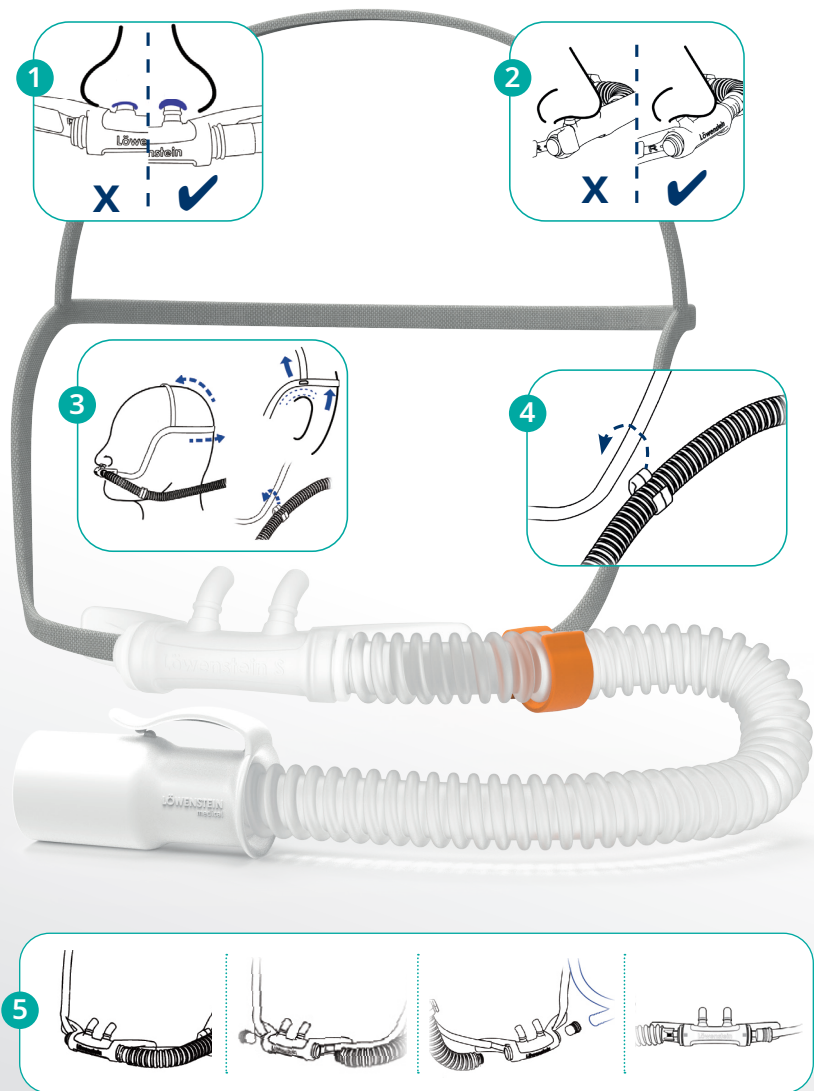


Quick reference guide

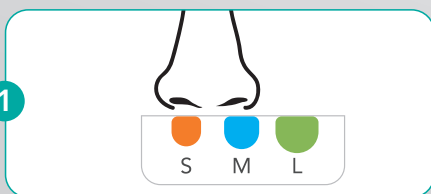
LM Flo₂

High-flow nasal cannula Adults

1. Select the appropriate prong size. The prongs must not completely close the nostrils. A clear gap should be seen around both prongs.
2. To ensure optimal positioning of the prongs, "Löwenstein" should be visible on the nose piece.
3. Make sure that the head band is not twisted.
4. Make sure that the head band and tube are fixed by the head band clip so that the prongs cannot be pulled out of the nostrils.
5. Change the hose connection side as shown in Figure 5.

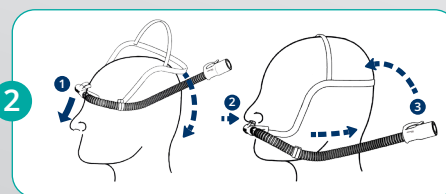


Determining prong size



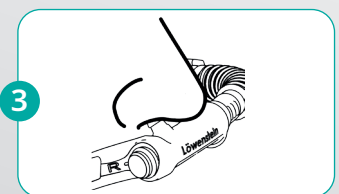
Determine the size of the prongs using the template on the packaging.

Putting on LM Flo₂



Pull the head band over your head. Ensure that the cannula does not slip.

Adjusting prongs



Insert the prongs into the nostrils.

CE 2195



gba10463en2211



loewensteinmedical.com

Foxxmed LTD.
No. 60, Jianjin 2nd Rd.
Dongshan Township
Yilan County 269, Taiwan (R.O.C.)

Sales + Service
Löwenstein Medical
Arzbacher Strasse 80
56130 Bad Ems, Germany
T. +49 2603 9600-0
F. +49 2603 9600-50
info@loewensteinmedical.com
loewensteinmedical.com

With people in mind