

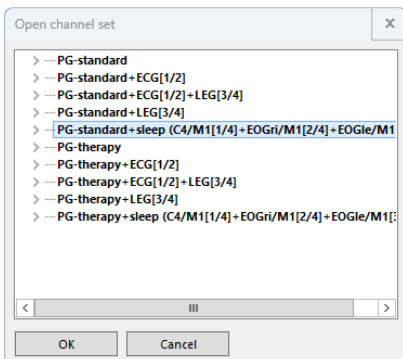
Scala

Instructions for sleep recording with Scala



To perform a polygraphic recording with additional sleep information using Scala, the following steps must be taken:

1. Initialize a measurement in the MSV software



According to the instructions [gba10442en2208](#), [Quick Guide Offline Measurement – Initialization](#):

Under point 2.6, the predefined channel set **PG-Standard+Sleep (C4/M1[1/4], EOGre/M1[2/4], EOGli/M1[3/4])** must be chosen and confirmed with **OK**.

The initialization procedure must be completed in accordance with standard protocol.

2. Apply Scala to the patient

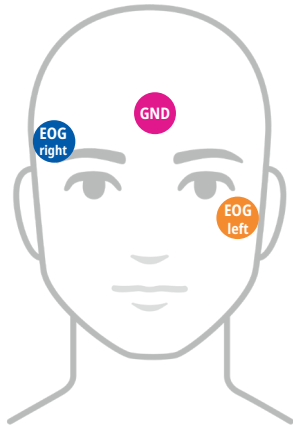


The SCALA system must be applied to the patient using a standard polygraphic leads, including a nasal cannula, SpO₂ sensor, and thoracic and abdominal belts.

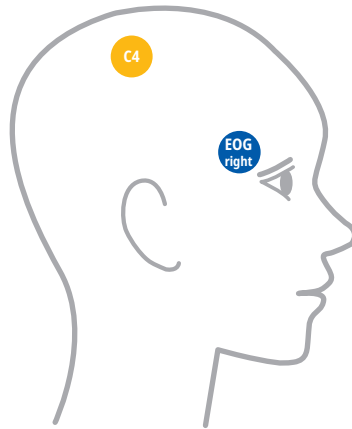
See also instructions: [gba10439en2307 - Applying Scala to patients](#)

3. Additional application of EEG, EOG, mastoid and GND leads for sleep recording

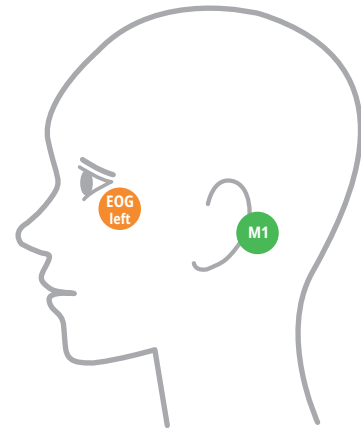
The electrodes must be placed on the patient and connected to the Scala as shown in the following illustrations.



3.1.
Position the GND and
EOG electrodes



3.2.
Place the EEG electrode,
C4 position



3.3.
Place the mastoid electrode,
M1 position

4. Connecting the EEG, EOG and mastoid electrodes to the Scala ExG 1-4 inputs and the GND input



CE 0483

Made in
Germany

Dr. Fenyves und Gut Deutschland GmbH
Daimlerstr. 23
72414 Rangendingen, Germany

Sales + Service
Löwenstein Medical
Arzbacher Straße 80
56130 Bad Ems, Germany
T. +49 2603 9600-0
F. +49 2603 9600-50
info@loewensteinmedical.com
loewensteinmedical.com



With people in mind

